

EBB AND FLOW BENCHES

EXPANDED METAL BENCHES

LED GROW LIGHTS

PLANT SUPPORT SYSTEMS

AUTOMATED FERTILIZER INJECTORS



INNOVATIVEGROWERSEQUIPMENT.COM





The premier equipment supplier to commercial growers throughout North America. Helping our clients succeed by customizing innovative solutions for demanding markets.



(815) 991-5010

CUSTOM EBB & FLOW BENCHES



SAVE YOUR RESOURCES

You can save up to **90% of water** and up to **90% of fertilizer*** using IGE's custom Ebb & Flow benches. Not only that, you'll save many hours of labor every day pairing our benches with typical control systems. Plus, diseases are much less common with our custom Ebb & Flow system so you'll save money on fungicides!

*compared to other irrigation methods

INNOVATION AT YOUR FINGERTIPS

Custom made to order to
match your needs exactly

Ideal for retail
and production areas

Available as fixed, rolling,
and max-roll configurations

Available in multi-tier benches



Ebb and Flow benches from Innovative Growers Equipment, Inc. are manufactured from the finest, most durable materials available. They are designed to give you many, many years of dependable, worry free service.

BENCH SIZES

All Ebb and Flow benches from Innovative Growers Equipment are custom manufactured to order. We currently stock 4', 5', and 6' wide trays at our manufacturing plant. Many other widths are available as special order, requiring 2 to 3 weeks longer to ship. All bench lengths are custom made to meet your exact needs. (Generally benches must be at least 7' long). In addition, we also currently stock one piece 4' X 8' trays.

STATIONARY BENCHES

All sizes of Ebb and Flow benches from Innovative Growers Equipment can be furnished as stationary benches. These are commonly used in areas where easy access to all the benches is desired. This is common in retail areas where customer access is important, as well as production areas where it is necessary to have access to the crop frequently.

STANDARD ROLLING BENCHES

All sizes of Ebb and Flow benches from Innovative Growers Equipment can be furnished as rolling benches. These are commonly used in production areas where it is desired to make maximum use of the available production space. Some degree of access to the crops is given up in exchange for greater efficiency of production. Standard rolling benches are the same price as the same size stationary benches.

RELIABLE CONSTRUCTION

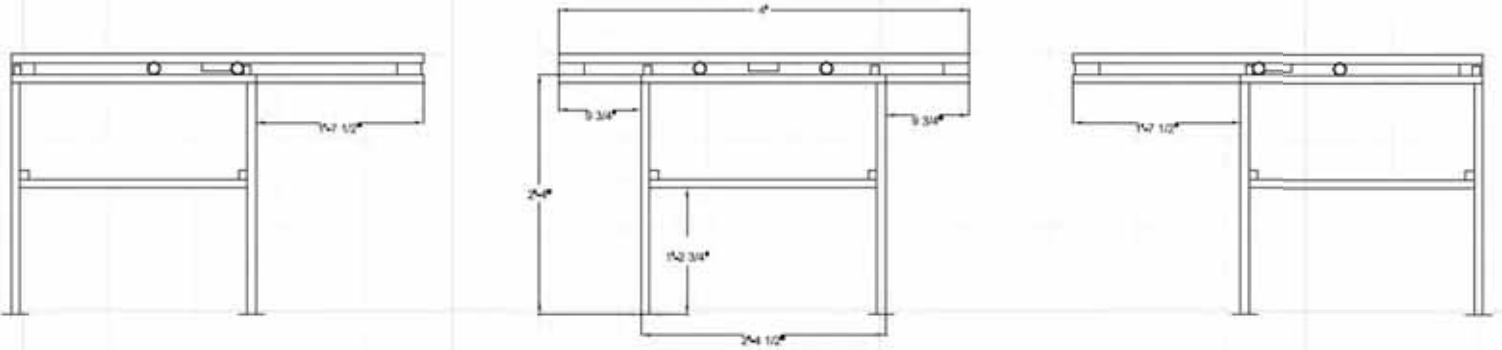
- All legs, leveling headers, and bench framework are made from strong galvanized steel tubing (no flimsy sheet metal)
- Side and end rails, bench corners, and leg connectors are all custom extrusions of heavy marine grade aluminum
- Bench top trays are vacuum formed from sturdy polystyrene with UV inhibitor for decades of worry free use
- All parts are delivered to you pre drilled, ready for easy assembly, including all necessary fasteners. Benches can be assembled with a few common hand tools.



MAX ROLL BENCHES

Maximum Efficiency, Minimum Stress

All sizes of Ebb and Flow benches from Innovative Growers Equipment can be furnished as Max Roll - rolling benches. These are commonly used where maximum efficiency in the use of production space is desired, and good access to all the crop area by personnel and equipment is required, such as in a CEA indoor growing environment with expensive lighting equipment, etc. Max Roll benches are generally installed on concrete floors, as some of the legs are required to be attached to the floor with anchors to prevent tipping.



IGE's 4' Max Roll bench

Bench Size

Standard Roll

Max Roll

4'

7.5"

9.75"

4' 6"

8.75"

11.75"

5'

9.75"

13.25"

6'

11.5"

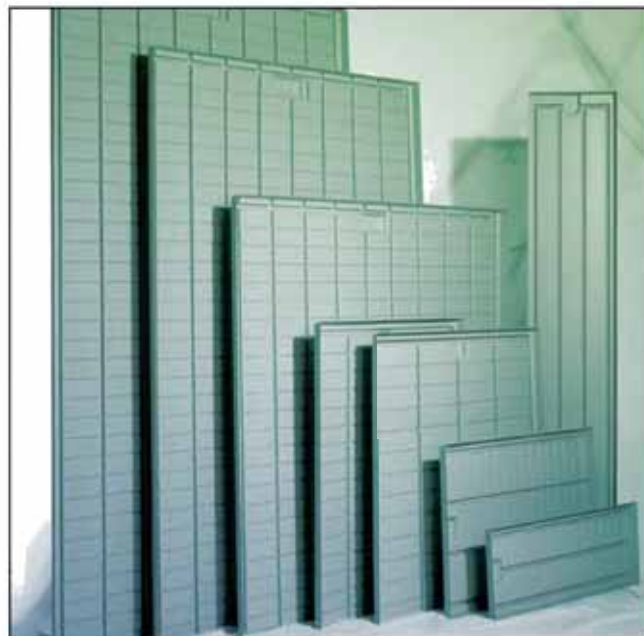
15.5"

The rolling distances above are the distance that the benches will roll in either direction from a neutral (centered) position. If the benches are installed right next to each other, the aisle width available when both neighboring benches are rolled apart is double the distance shown in the chart.



EBB & FLOW TRAYS

Innovative Growers Equipment, Inc. also offers the Ebb and Flow trays by themselves. These can be used to replace trays in older existing benches, or to retrofit existing benches to an Ebb and Flow system. (Benches to be retrofitted MUST be sturdy, and able to be perfectly leveled.)



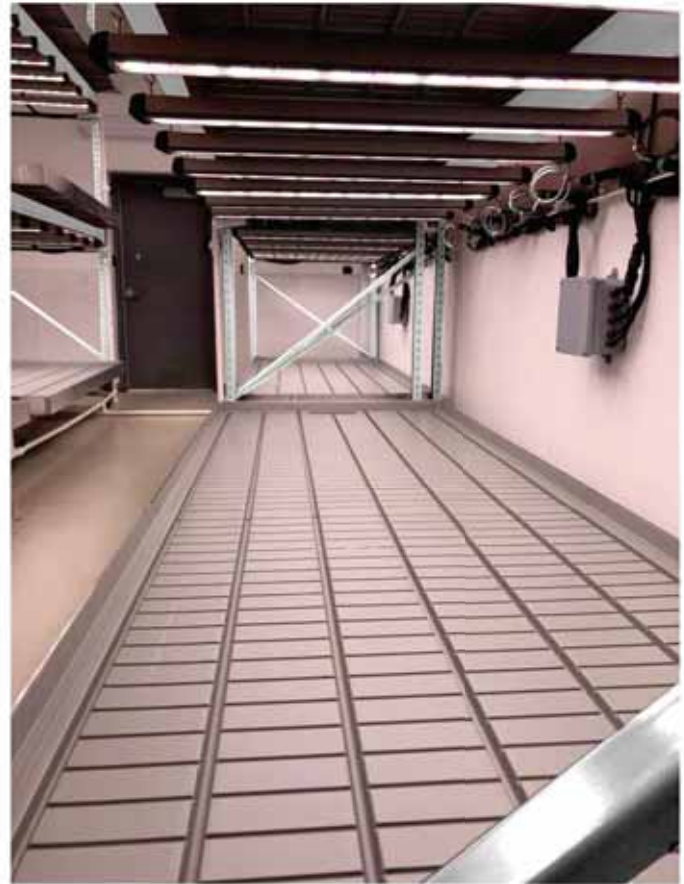
EXPANDED METAL BENCHES

Innovative Growers Equipment, Inc. can also provide our quality bench systems with expanded metal tops in place of the Ebb and Flow trays. All the framework, aluminum side rails, etc. are exactly the same. These are commonly ordered when there is a need for the expanded metal benches, but the grower or garden center wishes to have a uniform appearance throughout their facility.





(815) 991-5010



STATIONARY MULTI-TIER BENCHES

- ➔ Length of sections 8', 10', 12' available (able to connect together in one single unit)
- ➔ Height 6' to 24' in 2' increments
- ➔ Powder coated racks
- ➔ Heavy duty construction

Innovative Growers Equipment, Inc. offers our customer ebb and flow benches in multi-tier options. These are typically used in propagation areas, vegetative rooms, and mother rooms. They also have applications in other CEA systems growing crops such as leafy greens, micro-greens, etc. Multi-tiered Ebb and Flow benches are an ideal way of getting maximum production in your valuable growing area.



IGE ROLLING RACKS

Rolling Rack Configurations

- 8,10,12 foot increments
- Up to 50' total length
- Tracks under each upright
- Chain operated pulley system
- Track mounts on top of concrete floor must be level
- Our crew can install or send customer training
- 24' max height

Rolling Rack Materials

- Food grade products
- Heavy duty racks
- Staal and Plast trays/ Marine grade aluminum side rails/corners (same as our current colling benches)
- Galvanized drive rods, track, and steel cross bars





(815) 991-5010

Valoya Canna+ 120

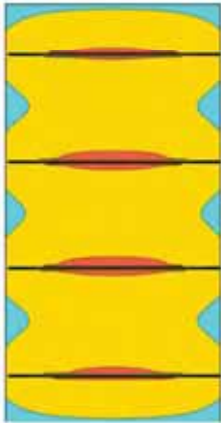
Valoya Canna+ 120 is a high intensity LED light for indoor cultivation of cannabis, both single and multitier.



- PPF 1300 $\mu\text{mol/s}$ (4 bars)
- Wet location / IP67
- GMP & GACP facility suitable
- AR coated glass for up to 98% light transmission
- Easy and flexible installation

Vegetative Phase

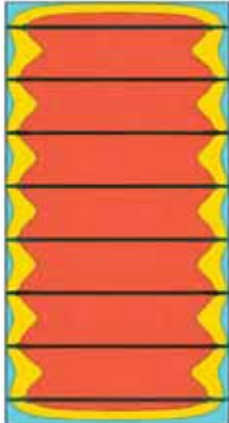
■ 400 $\mu\text{mol/s}$ (PPFD)



4' (1,2 m)

Flowering Phase

■ 800 $\mu\text{mol/s}$ (PPFD)



4' (1,2 m)

8' (2,4 m)

Mounting Options:

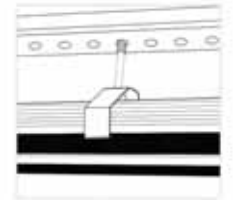
Standard



Standard



Optional



Valoya Canna+ 120*

Voltage input	120 VAC	208 VAC	230 VAC	240 VAC	277 VAC	347 VAC
Power input (incl. LED driver)	136 W	133 W	132 W	132 W	132 W	132 W
Current input	1.13 A	0.65 A	0.58 A	0.56 A	0.49 A	0.40 A
Light output	320 $\mu\text{mol/s}$	321 $\mu\text{mol/s}$	319 $\mu\text{mol/s}$	319 $\mu\text{mol/s}$	319 $\mu\text{mol/s}$	319 $\mu\text{mol/s}$
Light efficacy (380 nm - 820 nm)	2.35 $\mu\text{mol/W}$	2.41 $\mu\text{mol/W}$	2.42 $\mu\text{mol/W}$	2.42 $\mu\text{mol/W}$	2.42 $\mu\text{mol/W}$	2.42 $\mu\text{mol/W}$
Weight, luminaire / LED driver	5.7 / 3.3 lb (2,6 / 1,5 kg)					
Dimensions (L x W x H)	46.3" x 2.9" x 2.3" (1176 x 73,5 x 58 mm)					
Cables	11.8" (0,3 m) mains to LED driver, 52" (1,3 m) luminaire to LED driver, 11.8" (0,3 m) dimming cable					
Dimming	1 - 10 V, PWM. Light output: 10 - 100%					
Distance from the plants (rec.)	4" - 13' (0,1 - 4,0 m)					
Light intensity decay	Max 10% at 36 000 h. Typical usage 50 000 h.					
PPFD (4 bars, 4' x 4')	840 $\mu\text{mol/m}^2/\text{s}$ at 4" (730 at 8", 560 at 16", 430 at 24")					
PPFD (4 bars, 1,2 m x 1,2 m)	840 $\mu\text{mol/m}^2/\text{s}$ at 0,1 m (730 at 0,2 m, 560 at 0,4 m, 430 at 0,6 m)					
Light distribution angle	120°					
Plug type	Open end (pigtailed)					
Ambient operating temperature	32 - 104 °F (0 - 40 °C)					
Cooling	Passive (no fins / fans to collect dust and pathogens)					
Wet location rated (IP67), Impact protection rating IK08, RoHS compliance, 3 years limited warranty (5 years optionally available)						

* Typical values



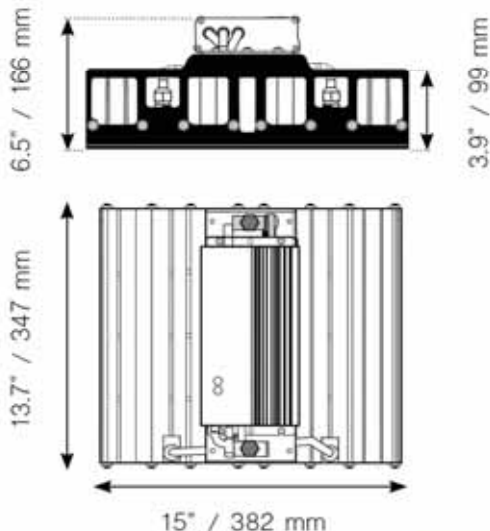


Valoya Canna+ 400

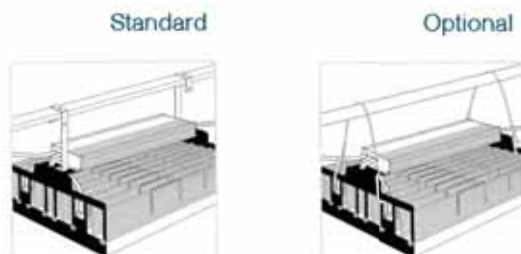
Valoya Canna+ 400 is a high intensity LED light for sea of green cannabis cultivation. It is suitable as a sole source or as supplemental lighting, with HPS.



- PPF 880 $\mu\text{mol/s}$
- Damp location / IP55
- AR coated glass for up to 98% light transmission
- Compact design for minimal shading
- Easy and flexible installation



Mounting Options:



Valoya Canna+ 400*

Voltage input	120 VAC	208 VAC	230 VAC	240 VAC	277 VAC	347 VAC
Power input (incl. LED driver)	-	393 W	392 W	391 W	390 W	-
Current input	-	1.93 A	1.75 A	1.68 A	1.49 A	-
Light output	-	880 $\mu\text{mol/s}$	878 $\mu\text{mol/s}$	880 $\mu\text{mol/s}$	881 $\mu\text{mol/s}$	-
Light efficacy (380 nm ~ 820 nm)	-	2.24 $\mu\text{mol/W}$	2.24 $\mu\text{mol/W}$	2.25 $\mu\text{mol/W}$	2.26 $\mu\text{mol/W}$	-
Weight (incl. driver)	24.3 lb (11 kg)					
Dimensions (L x W x H)	13.7" x 15" x 6.5" (347 x 382 x 166 mm)					
Cables	11.8" (0,3 m) mains input, 11.8" (0,3 m) dimming cable					
Dimming	0 - 10 V, PWM. Light output: off, 6 - 100%					
Distance from the plants (rec.)	20" - 158" (0,5 - 4,0 m)					
Light intensity decay	Max 10% at 36 000 h. Typical usage 50 000 h.					
PPFD (4' x 4')	450 $\mu\text{mol/m}^2/\text{s}$ at 20" (310 at 30", 220 at 40")					
PPFD (1,2 m x 1,2 m)	450 $\mu\text{mol/m}^2/\text{s}$ at 0,5 m (310 at 0,75 m, 220 at 1 m)					
Light distribution angle	120°					
Plug type	Open end (pigtailed)					
Ambient operating temperature	+14 ...+95 °F (-10 - +35 °C)					
Cooling	Passive (no fins / fans to collect dust and pathogens)					

Damp location rated (IP55), RoHS compliance, 3 years limited warranty (5 years optionally available)

* Typical values





(815) 991-5010

HALO DE

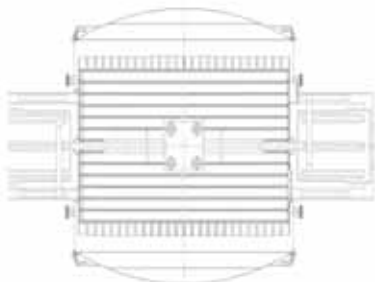
INTRODUCING THE HALO DE LIGHT SYSTEM



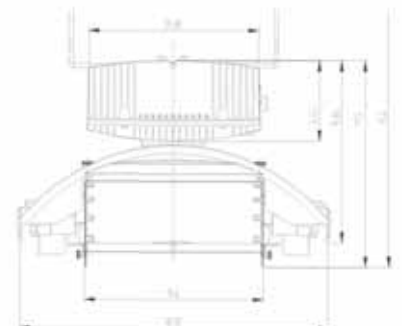
SIDE VIEW



UNDER VIEW



DIMENSIONS		
Length	18.5 in.	470 mm
Width	10.8 in.	275 mm
Height	14.7 in.	374 mm
Weight	13.23 lb.	6 kg



Introducing the revolutionary Halo DE 1000 watt lighting system. With over a dozen intelligent & state of the art improvements that have taken the grow light to the next level. With a 3 way adjustable reflector puts up to 30% more light on your crop, and puts you in control of the light pattern. The Halo DE comes with a USB port to allow for software updates on the wireless control. This allows you to dim, give a sunrise/sunset mode, turn on or off whatever lights you want. WiFi dimmable ballast has 1100/1000/825/750/630 watt settings. The Halo comes standard with a digital display to show useful information such as internal temp, current wattage setting, running hours of ballast, and any problems such as a voltage issue or lamp failure. The reflectors are made from the absolute highest quality Alanod German Miro 4 anodized aluminum. The aluminum is >95% reflective and diffuses the light to penetrate deeper into the plant canopy. Reflectors are thicker, brighter and last longer than competitors.

The most versatile light in the industry.



PRODUCTS SOLD BY INNOVATIVE GROWERS EQUIPMENT INC.

Gavita Lighting



Innovative Growers Equipment, Inc. is proud to offer Gavita lights and their long history -

Gavita is the largest specialized horticultural lighting company in the world. We are active on all five continents with projects ranging from single fixtures to large greenhouses with well over 100,000 fixtures, serving the retail, research and professional horticultural market.

Grodan

Holes are perfect size for any 1.5 in starter plug. Come in packs labeled with instructions. Big Mama is Grodan's largest block ever produced! Big enough to grow a large plant for its entire life. More than twice the amount of wool as our Hugo Block.



Quest Dehumidifier

Quest Dehumidifiers are designed to be placed overhead and out of the way, but can also be placed at ground level for plug and play operation.

To order call 815-991-5010 or email us at Sales@innovativegrowersequipment.com



(815) 991-5010



FERTILIZER INJECTORS FOR NUTRIENT & pH CONTROL

Innovative Growers Equipment, Inc. is proud to offer the complete line of fertilizer injectors from GVI in Denmark. Each of these machines continuously monitors the EC, and optionally, the pH of the outgoing irrigation water. Fertilizer and acid solution are continuously added as required to maintain the exact levels of fertilizer and the exact pH of the irrigation solution desired by the grower.

Each unit is assembled with the options and correct sized pump to exactly match the requirements of the grower. Machines are available with various capacities, and options.

- From one to many fertilizer stock solutions
- Option for pH control with acid solution injection
- Can be used in re-circulating systems
- Flow rates from a single hose to over 200 GPM
- Can have integrated irrigation controller
- Models available with touch screen and remote (internet) control
- Some models can integrate directly with climate computers
- All models can be started by an outside irrigation controller



New from Innovative Growers Equipment Inc.

Complete, turn-key NFT systems for lettuce and herb production

- Seamless gutters in customizable lengths of 4' to 40'
- Customized hole size, shape and location
- Deep, European design gutters accommodate Elis and other sleeved media products
- Static/manual or fully automated systems
- Single level or tiered production systems
- Sturdy, high quality frames from Innovative Growers Equipment (the same supports used for greenhouse benching)
- Bench height options from 14-42"
- Gutters constructed with food grade PVC
- White for reflectivity and reduced heat load
- Experienced, established European supply partner
- Product stocked in the US in 8', 10', and 12' lengths
- Available in manual and fully automated systems



Kits for a 30'x96' house starting at just \$25,000

- 10' gutters with holes on 6" centers
- Freestanding bench legs and support bars
- Drain gutters, tubing and fittings
- Acid and fertilizer injector with EC/pH monitoring
- Stainless steel pump and float switch
- 1000 gallon tank
- Delivered to your door





(815) 991-5010

THE NEW BENCHMARK IN COCO COIR

Our mission at California Substrates is to provide growers with the very best grow media for their operations.

WHY CALIFORNIA SUBSTRATES COCO?

UNIQUE BUFFERING PROCESS

Our proprietary buffering process allows growers to use any hydroponic nutrients. No coco specific nutes are required.
Feed your plants, not your coco.

CONSISTENCY

Our factory exclusively manufactures California Substrates Coco which allows us to control our process every step of the way ensuring a consistent product.

IDEAL PH & SUPER LOW EC

Our coco is double washed to ensure it has a low EC and the pH is ideal for hydroponics.

NO AMENDMENTS NECESSARY

We remove the fine coco dust, so the coir retains less water, allowing you to feed your plants several times a day without the need for amendments such as perlite or expanded clay pellets.

EASY TRANSITION FOR ROCKWOOL GROWERS

If you currently grow in rockwool, you can switch to California Substrates Coco without changing your recipe or feeding routine.

COCO PERFECTED!



IMPORTANT THINGS TO KNOW WHEN UPGRADING TO CALIFORNIA SUBSTRATES COCO

**YOU DON'T NEED ADDITIONAL CAL MAG
OR COCO SPECIFIC NUTRIENTS**

**GREAT FOR CLONING,
WITH NO SHOCK WHEN
TRANSPLANTING UP**

NO AMENDMENTS NECESSARY

**YOU CAN FEED YOUR PLANTS
MULTIPLE TIMES A DAY**

UNRIVALED CONSISTENCY



PROJECT PHOTOS





(815) 991-5010

CUSTOM PLANT SUPPORT SYSTEMS

Innovative Growers Equipment, Inc. offers custom plant support systems to fit on any of our benches.

These systems consist of: Uprights that are attached to the bench side rails, and are connected by a rigid cross bar that has a thumb screw on each upright post for easy height adjustment. These are connected for the length of the bench on each side with rigid steel tubing. This provided a sturdy platform to attach plastic plant netting.

The plant support system is ideal for any growers producing tall crops that benefit from being supported as they grow, such as cut flowers, medicinal cannabis crops, etc.





**LET OUR TEAM HELP YOU
CHOOSE THE PERFECT
SOLUTION TO MEET
YOUR NEEDS**

Please feel free to contact us at any time to discuss your needs, or any future plans you may have. Our team is happy to share more than 25 years of experience in Ebb and flow benches, and related components and irrigation systems. We can help you with plans, make suggestions, and discuss possible layout options.



(815) 991-5010
SALES@INNOVATIVEGROWERSEQUIPMENT.COM

INNOVATIVEGROWERSEQUIPMENT.COM