

A close-up photograph of several green leaves, likely from a plant, covered in numerous clear water droplets. The leaves are arranged in a diagonal pattern across the frame. The background is a soft, out-of-focus green. The image is split diagonally by a blue gradient that runs from the bottom-left corner towards the top-right corner.

# Link4

CORPORATION

## iDOSER

AUTOMATIC DOSING & FERTIGATION SCHEDULING

# iDOSER

AUTOMATIC DOSING & FERTIGATION SCHEDULING



Vapor Pressure Deficit



Batch Dosing (Drain to Waste)



Recirculating System



Email Notifications

**Link4's brand new iDoser** is the automated dosing system that growers have been waiting for. Imagine a system that knows what your plants need, even before you do. That kind of control is possible with Link4's new iDoser system, a stress-free solution for automated dosing and fertigation scheduling.

The iDoser provides accurate nutrient dosing, pH balancing and RO water for many different types of control systems – from large-scale greenhouses to backyard hydroponics. Plus, given that the LinkConn software is database driven, it can be controlled by an enterprise-grade server or installed right onto your laptop for optimal control and visibility.

The iDoser system also includes up to two backup sensors and logs all activity, so if a problem does occur, you're on top of it before it becomes an even bigger problem. This helps you pave the way for efficient and plentiful growth you can rely on.

## iDOSER FEATURES

- Mix nutrients in *batches* (drain to waste) or *recirculation* (active injection) modes
- Inject more than 10 different nutrients into each tank and mix up to 8 different tanks of nutrients per controller, and up to 64 controllers per network
- Redundant safeties with up to 2 backup sensors, and built-in alarms to shut off/on any abnormal sensor readings or events
- Built-in VPD (Vapor Pressure Deficit) capabilities
- Logs virtually everything to create valuable charts for analysis
- Ability to control your lights, dehumidifiers, CO2, AC, pumps, and environmental control as well
- Crop protection: EC/pH alarms, sensor maintenance scheduling, high/low concentrate alerts, max allowable injection volume, and auto irrigation shut off

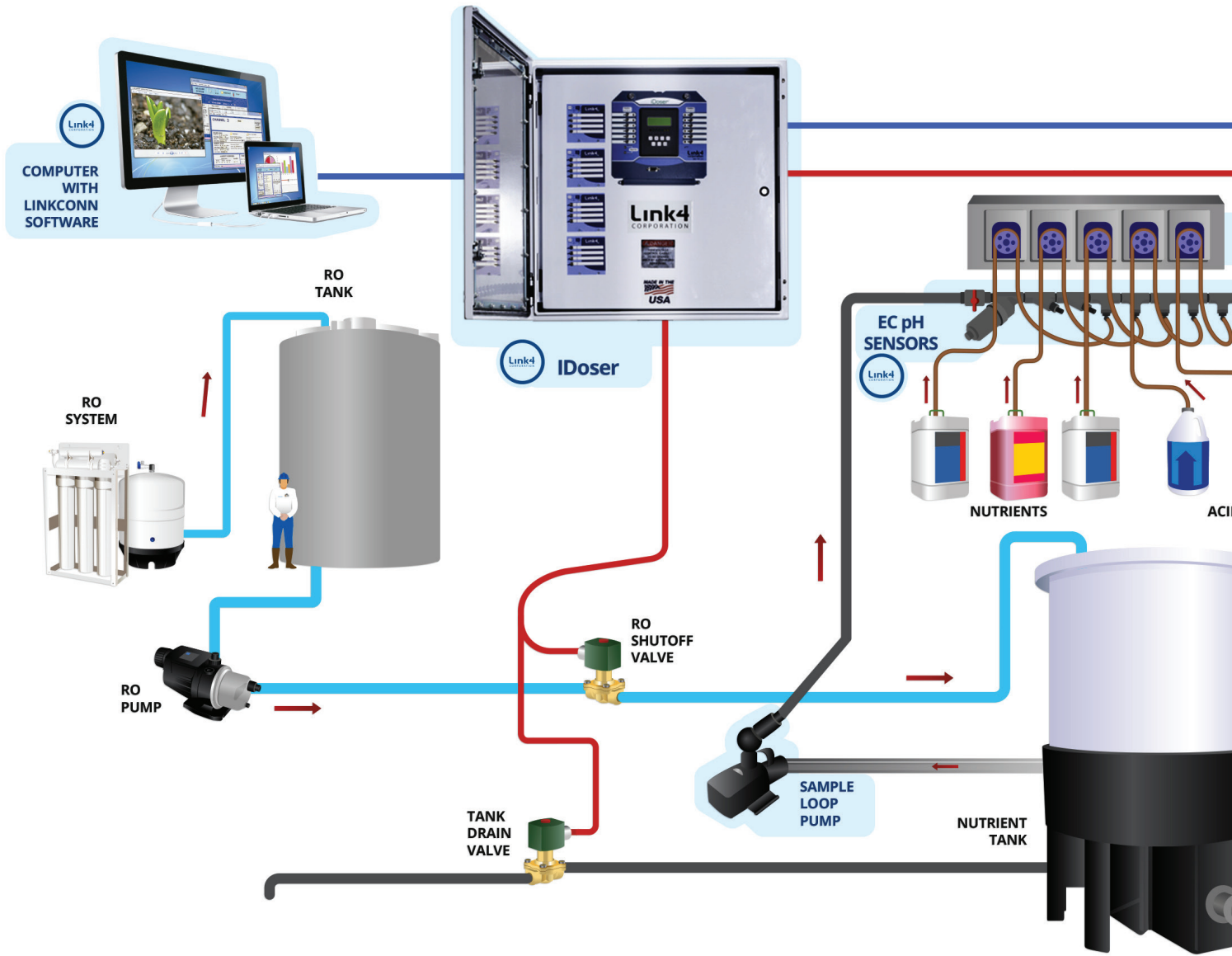


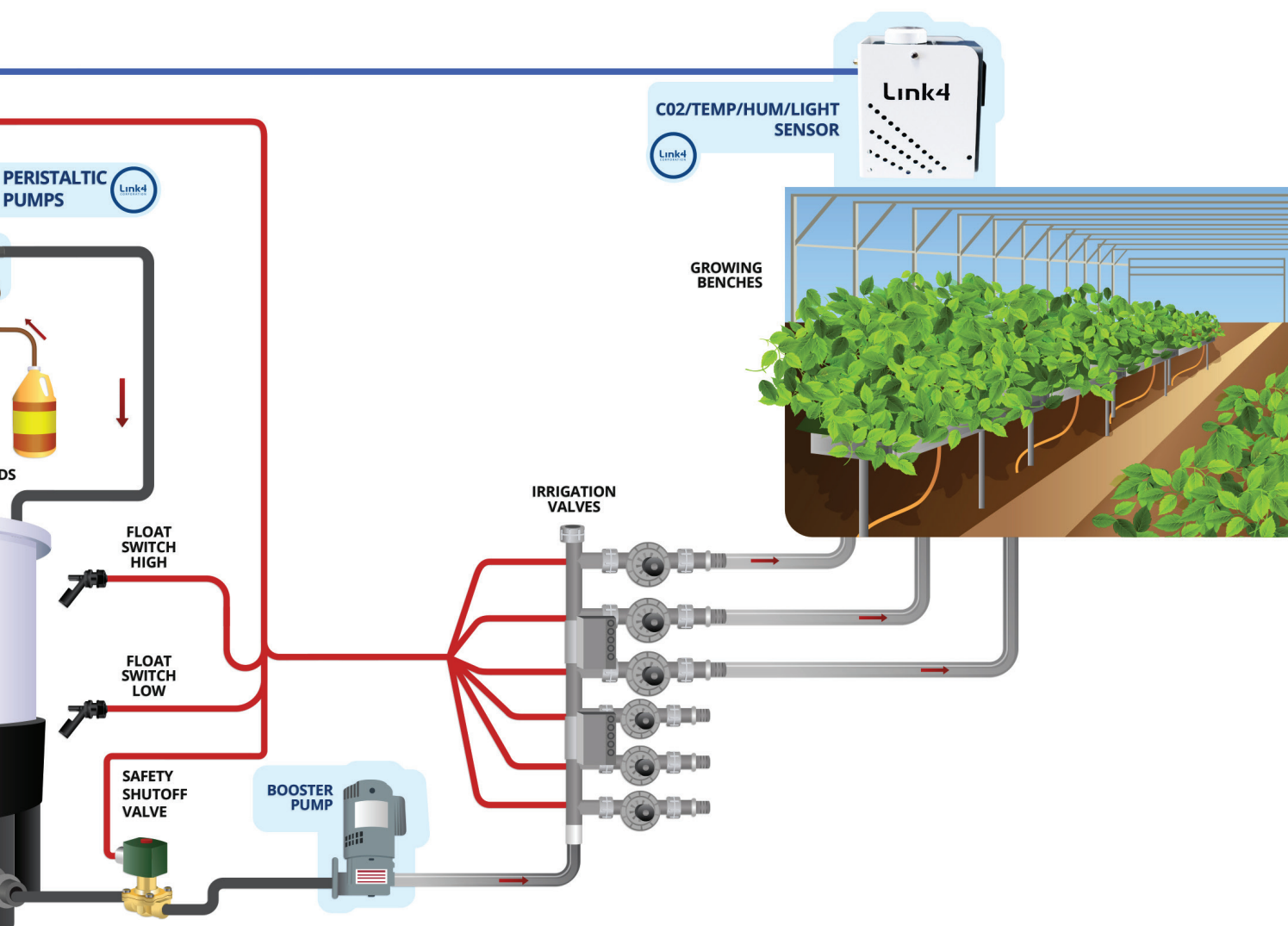
**iDOSER SYSTEM COMPONENTS**



# HOW THE iDOSER WORKS

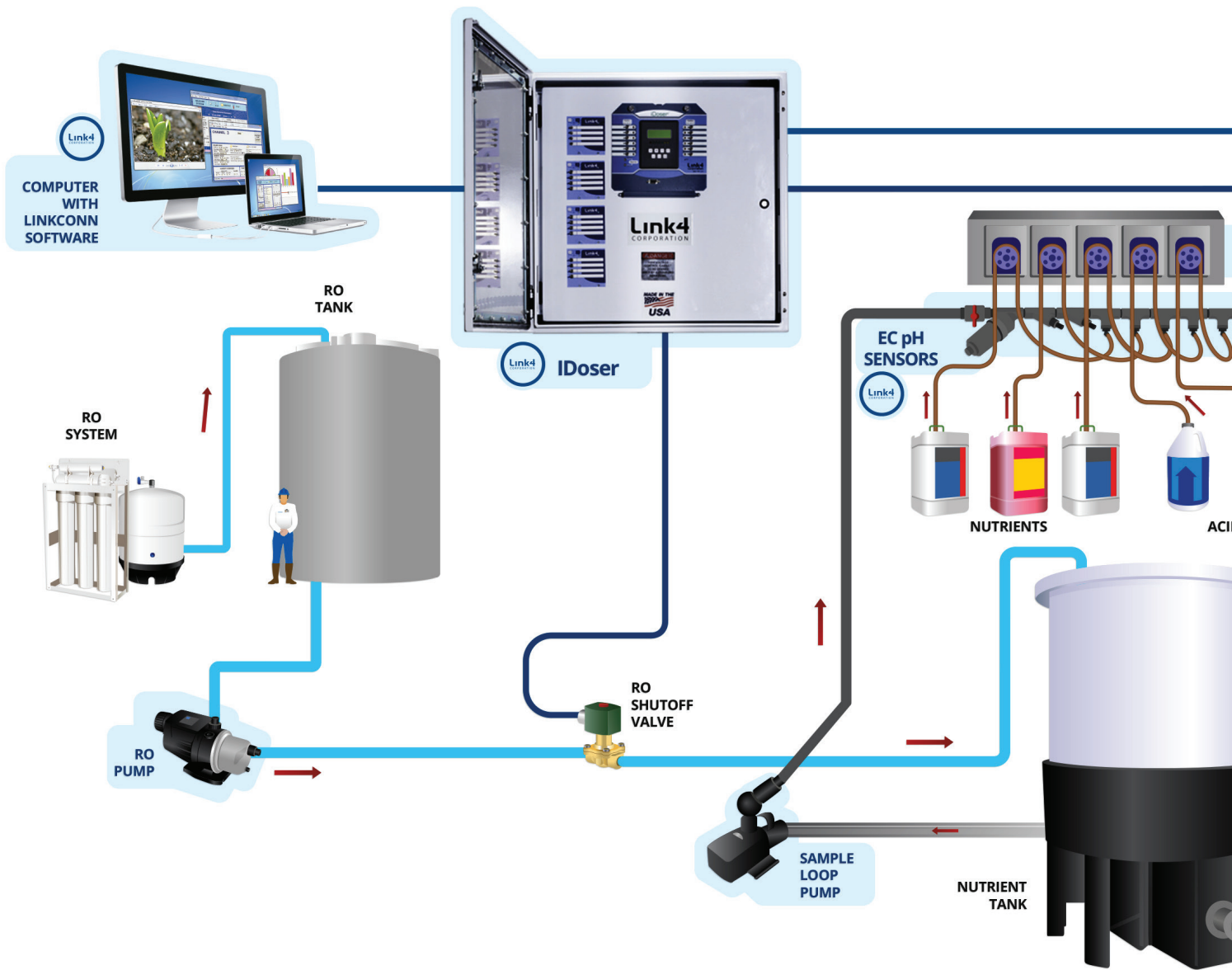
BATCH PROCESS (DRAIN TO WASTE)

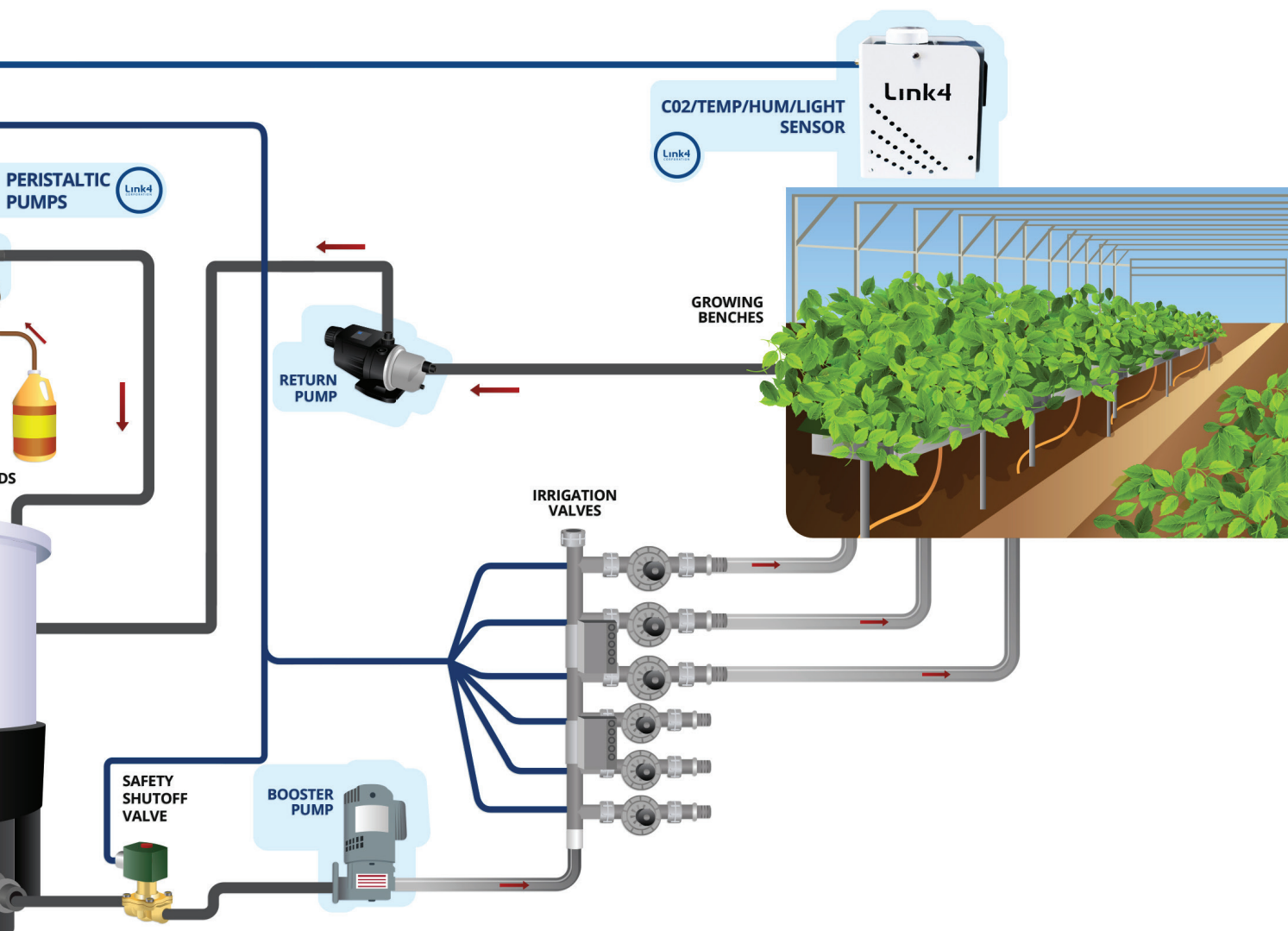




# HOW THE iDOSER WORKS

RECIRCULATION MODE





# LINKCONN

GREENHOUSE CONTROL SOFTWARE



## GREENHOUSE CONTROL SOFTWARE

At Link4, we understand how overwhelming greenhouse control systems can be. We understand that growers are looking for fast and easy ways to take control over their garden's environment. This is why we developed LinkConn Software.

LinkConn's smart layout saves time, makes it easy to optimize your growing conditions, allows total control over your equipment, and makes reviewing historical data simple. LinkConn is also simple to use and has a minimal learning curve, even for people new to horticulture.

LinkConn control software is a way to heighten a garden's efficiency while compiling important historical data, but it is not necessary when using the iGrow 1000 series controllers. The iGrow 1000 series of controllers are self-operated and are not dependent on the PC software to operate.

The new LinkConn 100 software has been proven successful in applications requiring different zones, e.g. transplants and seed beds. In a traditional system that utilizes multiple zones even minor changes can be very labor intensive, but with Link4's LinkConn 100 software growers can conveniently control all of their remote hardware through a single PC. All settings can be modified in groups; saving the grower time and reducing errors.



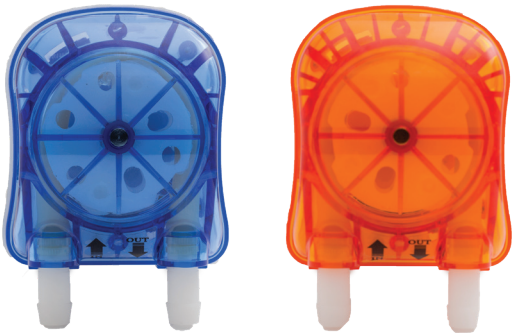


Actual product(s) may vary from photo(s). Prices and specifications subject to change without notice.

## MINIMUM SYSTEM REQUIREMENTS

- Windows XP™ or Windows 7™
- Pentium III or Newer
- Hard Disk Space 120GB

# ACCESSORIES



## PERISTALTIC PUMPS

Unreliable dosing can be a huge problem in your crop yield. It's time to start dosing smarter with the Link4 peristaltic pumps for automatic dosing and fertigation scheduling.

All you have to do is connect it to your existing tanks for accurate delivery of the right nutrients, every time. The extremely quiet operation and high quality materials make it hard to beat with options designed to fit your individual grow system. Your plants will thank you for it.



## ADISM - Advanced Digital Integrated Sensor Modul

When you've got a entire grow operation going, you can't be watching everything at once. But you can have a sensor that is. The ADISM sensor gives you complete peace of mind with a differential pressure to provide accurate readings for temperature, humidity, CO<sub>2</sub>, and solar light. Its intuitive programming makes it easy to set up and easy to use on a day-to-day basis. Plus, it's compatible with Link4's iGrow 1000 series.



Vapor Pressure Deficit



CO<sub>2</sub> Sensor



Temperature



Solar Light Sensor



Humidity Sensor



#### EC/TEMP SENSOR

In any hydroponic grow system, the health of your solution determines the health of your plants. But it's not enough to just guess about it. Link4's EC sensor monitors your solution's electrical conductivity, so you always know if there's a change or a potential problem.

It works with your existing Link4 iDoser, so you don't have to worry about compatibility. It also has a convenient and portable design with smart sensors that simplify calibration. With a reliable performance and a one year limited warranty, you really can't afford not to have the EC Sensor as part of your grow operation.



Regular Tip

Flat Tip

#### pH SENSOR - Regular & Flat Tip

When it comes to your grow process, the water quality can make or break the entire system. Link4's pH sensor helps you accurately keep track of your pH levels, constantly analyzing for changes that could affect your yield. Plus, it easily interfaces with your existing Link4 iDoser for simplicity of use.

Choose from regular and flat tip probes, depending on what best suits your operation. The durable body is guaranteed to last for up to a year with a low-maintenance sealed gel design to prevent contamination.

# Link4

CORPORATION

**DISCLAIMER**

LINK4 EQUIPMENT, PRODUCTS AND SERVICES ARE INTENDED FOR LEGAL USES ONLY under all applicable, federal, state and local laws. Link4 does NOT encourage or otherwise advocate the illegal use, cultivation, manufacture, distribution or sales of illicit plants or controlled substances in any way. While Link4 endeavors to provide all of our clients with unsurpassed product, service, and support, we reserve the right to refuse sales or services in the event Link4 equipment or products are or will be used in the illegal cultivation of illicit plants or controlled substances.



**DELIVERING CONFIDENCE THROUGH INTELLIGENT ENVIRONMENTAL CONTROLS AND AUTOMATION SOLUTIONS**

175 E. Freedom Avenue, Anaheim, CA 92801 | 714.524.0004 | 866.755.5465 | Fax: (714) 854-7244 | [www.link4corp.com](http://www.link4corp.com)